



MONTHLY MEMBERSHIP PROGRESS REPORT

District 25 A

Results as of: 02/28/2019

GMT: STEVE ANTON

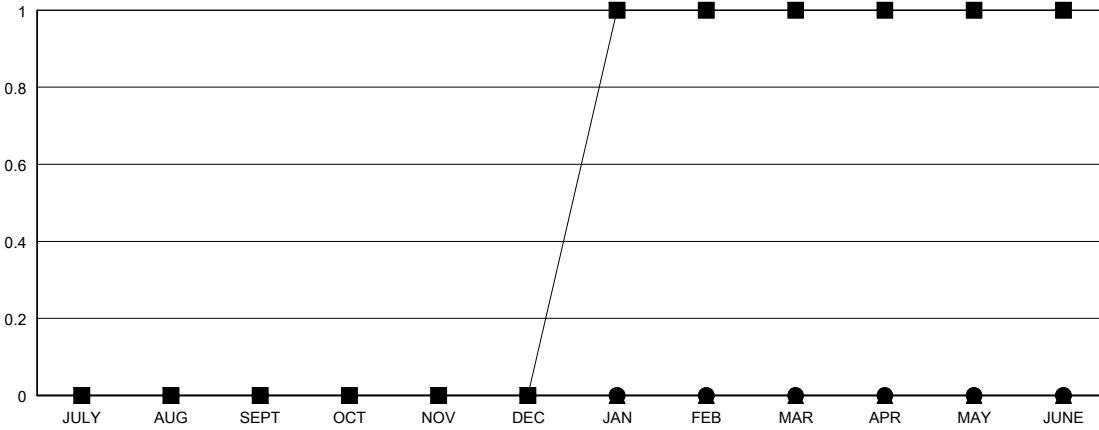
LOCATION INDIANA

GMT CA

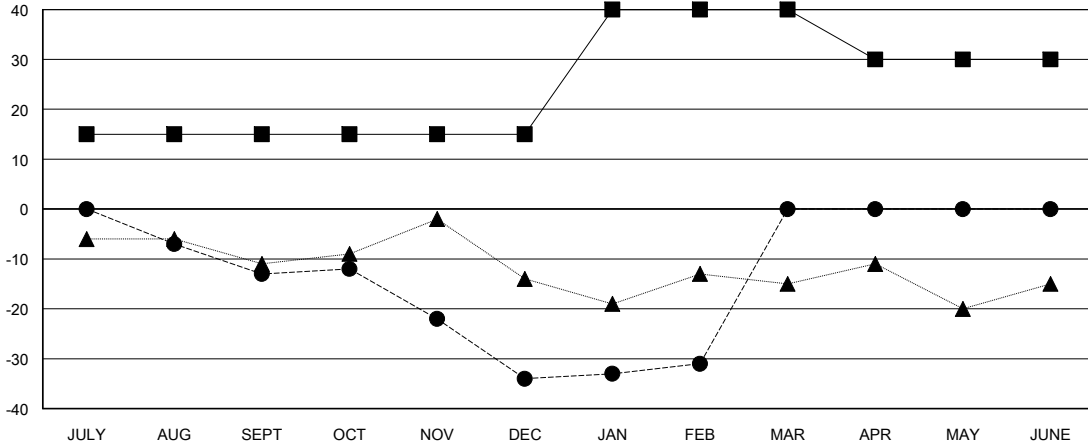
Clubs			
RESULTS FOR 2018-2019			
QUARTER	NEW CLUB GOAL	NEW CLUBS	DROPPED CLUBS
JULY/AUG/SEPT	0	0	0
OCT/NOV/DEC	0	0	0
JAN/FEB/MAR	1	0	0
APR/MAY/JUNE	0	0	0

Members			
RESULTS FOR 2018-2019			
QUARTER	MEMBER GROWTH NET GOAL	MEMBER GROWTH ACTUAL	DROPPED MEMBERS ACTUAL (including transfers)
JULY/AUG/SEPT	15	24	31
OCT/NOV/DEC	0	18	36
JAN/FEB/MAR	25	11	7
APR/MAY/JUNE	-10	0	0

GOALS AND ACTUAL NEW CLUBS CUMULATIVE



GOALS AND ACTUAL MEMBERS CUMULATIVE



DROPPED CLUBS: 0

22 CLUBS OF 50 ADDED 1 OR MORE NEW MEMBERS

GENDER DISTRIBUTION	
MALE	849 (66.59%)
FEMALE	426 (33.41%)
Women Percentage Fiscal Year Goal: 35%	

DROPPED MEMBERS	
DECEASED	17
CLUB CANCELLED	0
OTHER	57
TOTAL	74

[CLICK HERE FOR CUMULATIVE MEMBERSHIP DATA](#)

TOTAL FAMILY UNIT MEMBERS	314
FAMILY MEMBERS PAYING HALF DUES	161